

QUAZI DESIGN

A woman with dark hair pulled back is shown in profile, looking towards the left. She is wearing a white, long-sleeved, off-the-shoulder top and a vibrant, bright green skirt. The background is a dense garden with large, dark green banana leaves and other foliage. The lighting is bright and natural, suggesting an outdoor setting.

JEWELLERY 2024

A woman is shown from the waist up, looking directly at the camera. She is wearing a bright yellow, ribbed, square-neck crop top with ruffled shoulders and white, high-waisted pants. She is also wearing large, gold-colored hoop earrings. The background is a lush garden with large green banana leaves and some red flowers. The lighting is bright and natural, suggesting an outdoor setting.

ARTISAN LED, SUSTAINABLE DESIGN FOR SOCIAL IMPACT

Born out of a partnership between a designer and the local magazine distributor we started in 2010 in order to create much needed employment in Eswatini, Southern Africa.

What began as an experiment in design for social impact has become a small thriving business with a solid community of local women artisans. We focus on developing new and innovative techniques using waste paper, wanting to change the perception of recycled materials.

We believe in sustainable design, ethical production, transparency, and craftsmanship., Using our own simple yet pioneering techniques our women make each product by hand, with basic tools and the sun's rays.



100x
waste
paper



community of
women artisans



sustainable design
using water based
materials



creatively handmade
using innovative
techniques



fair trade
principles



We work with a small group of women who have been with us since the beginning.



INHLABA

Meaning *aloe* in SiSwati





KHE khula earring gold



KHE khula earring



LGE lilanga earring gold



ALR aloe ring



HYR hyacinth ring



CTR coral tree ring



IGE lilanga earring



FUE futi earring



SIE sisanda earring



MME mimi earring

TUE tulip earring



CRE crocus earring



ECE echinacea earring



ASE astrantia earring





GDFE gold leaf earring



GDLE gold livivane earring



GDOE gold orchid earring

HERITAGE

This collection looks to Africa for inspiration and tells the stories of the Queens that live here. Our humble paper bead glistens and sparkles with gold as we make new from old.





BWE Bongiwe gold earring



BGE bead full gold



AWG Ayanda gold earring



BDG bead half gold



BDG bead full gold



CPG drop earring gold



FGE fan gold



BLOOM

This collection was inspired by wild flowers growing in unexpected places, their resilience and beauty is celebrated, bringing joy.



CBE
Gazania earrings in yellow



ABE
Aloe earrings



CBE
Candelabra earrings black



ABE
Aloe earrings in blue



CBE
Candelabra earrings red



ABE
Aloe earrings in pink



CBE
Gazania earrings in black

PAPER WOOD

Bringing paper back to its original source as wood. These pieces are handmade from layers of paper, sculpted, cut, sanded and varnished. The colour comes from the pages of the magazine.





LHE lenhle earring



IFE lifu earring



IVE Invula earring



BLE Bonga earring



KLE Khanyeti earring



NLE Nesta earring custom colour

NKE Nokuthula earring





LHE
Lihlala layered earring



ZLE
Zandi layered earring



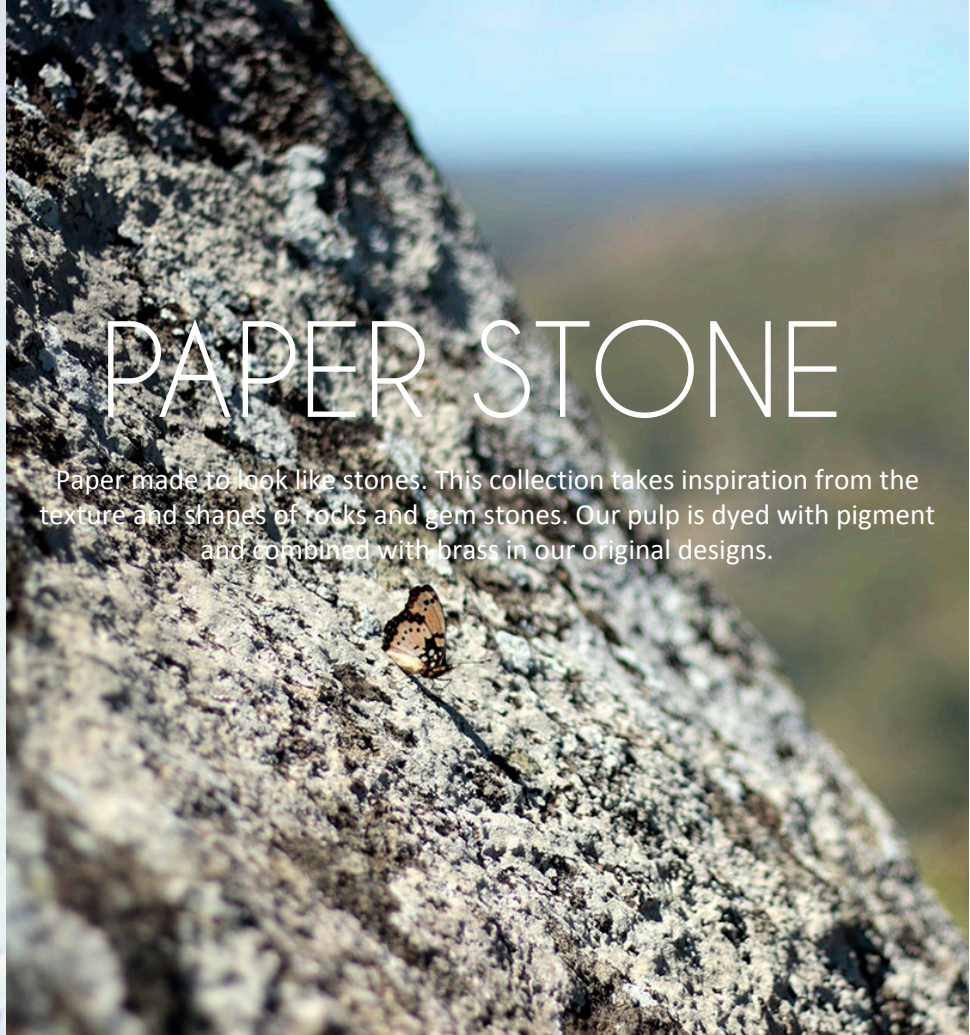
KEE
Khetsa layered earring



NLE Nesta Layered earring



LLE Lindiwe layered earring



PAPER STONE

Paper made to look like stones. This collection takes inspiration from the texture and shapes of rocks and gem stones. Our pulp is dyed with pigment and combined with brass in our original designs.



MPE Malachite earring in jade + black



OSE Opal earring in black



FDE Fundo earring in stone + black







LLPE Lapis lazuli earring



LDE Lindo earring blue



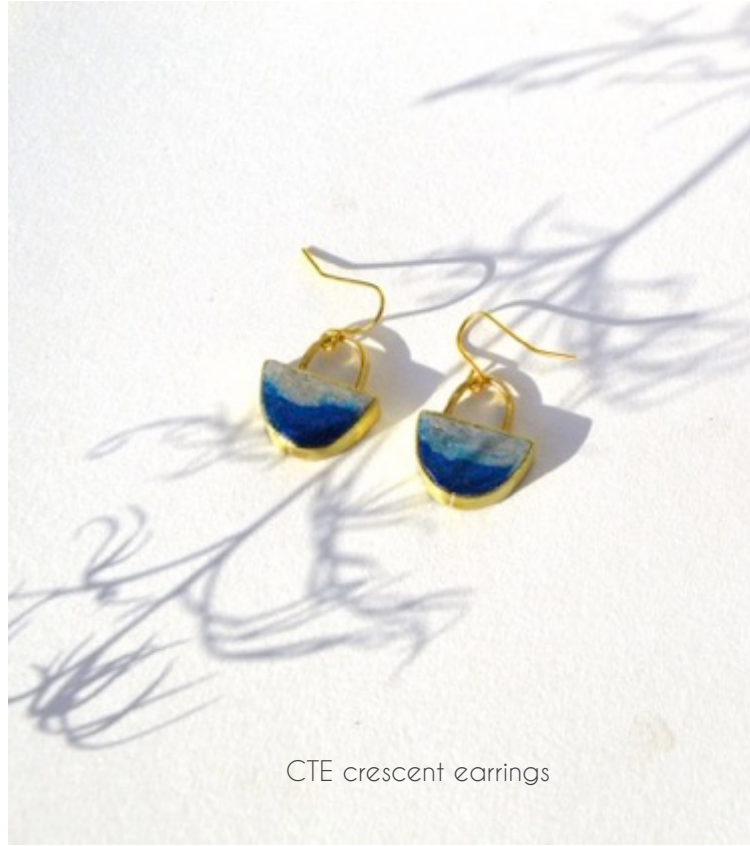
PTTE Triangle two tone earring



EAE Era earring in emerald



PYE posy earrings in blue



CTE crescent earrings

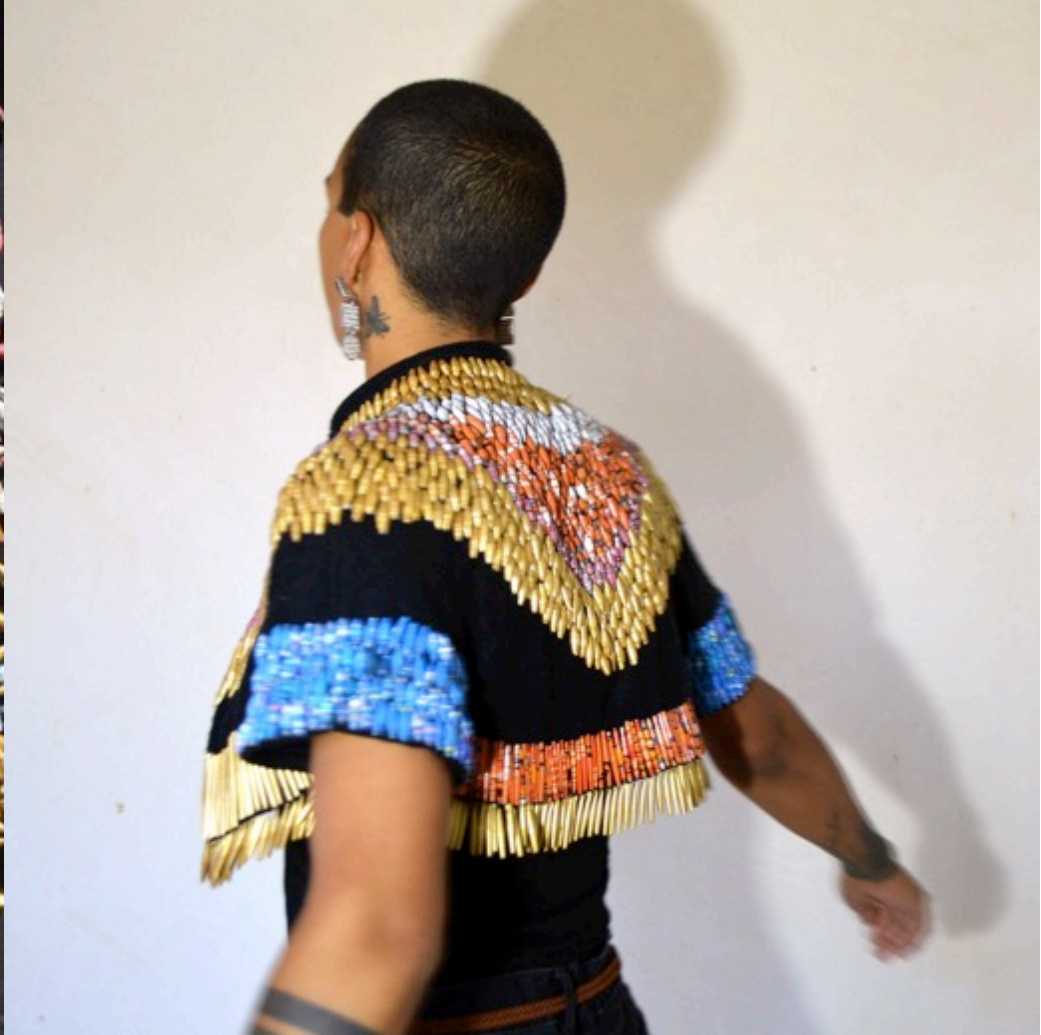


NTE

Nugget triple earring in coral

We are a small team that love to create
and collaborate...

Please get in touch for commissions and
custom pieces



PACKAGING, CARE AND MATERIALS

Orders will be packaged in a fabric pouch for shipping. Not individual pouches but bulk orders. Labels and silicone backs are packed separately for each earring to avoid damage and keep shipping costs low. To attach the earrings onto the labels make 2 holes at the top with a needle and insert earring hook and close with earring backs to secure in place.

Our earrings are handmade using brass, which can tarnish in time. It is possible to clean naturally using vinegar or lemon. Soak cotton swabs and rub them against the jewelry for five minutes to clean.

The paper part of the jewelry has been varnished for durability making it water resistant, to clean you can wipe with damp cloth.

Store the jewelry pieces in a clean, dry place, away from direct sunlight.



HOW TO ORDER

Please email your order to info@quazidesign.com and specify colours – see charts.

Bloom, Heritage and Paper Wood Collections use chart on the right.
Paper Stone use chart below.

Once we have received your order a pro-forma will be emailed to you for confirmation with freight quote. Please allow 6-8 weeks for production.

Products are non refundable except in the instance of damage, in which case a credit is given upon photographic evidence.

Full payment of the order, inclusive of freight costs will be required from the customer prior to dispatch of the goods.

All designs and products are original artistic design of Quazi Design and as such may not be copied in any form whatsoever.



A - COLOUR
CHART FOR PULP
PRODUCTS



B - COLOUR CHART
FOR LAYERED PRODUCTS